

rc5-648 MW=194?

ASAP (SOLID)

C₁₁H₁₄O₃

IMPBUL-C3AMU-WG-A 91 (0.866) AM (Cen,4, 80.00, Ar,10000.0,0.00,0.00); Cm (71:95-1:32x5.000)

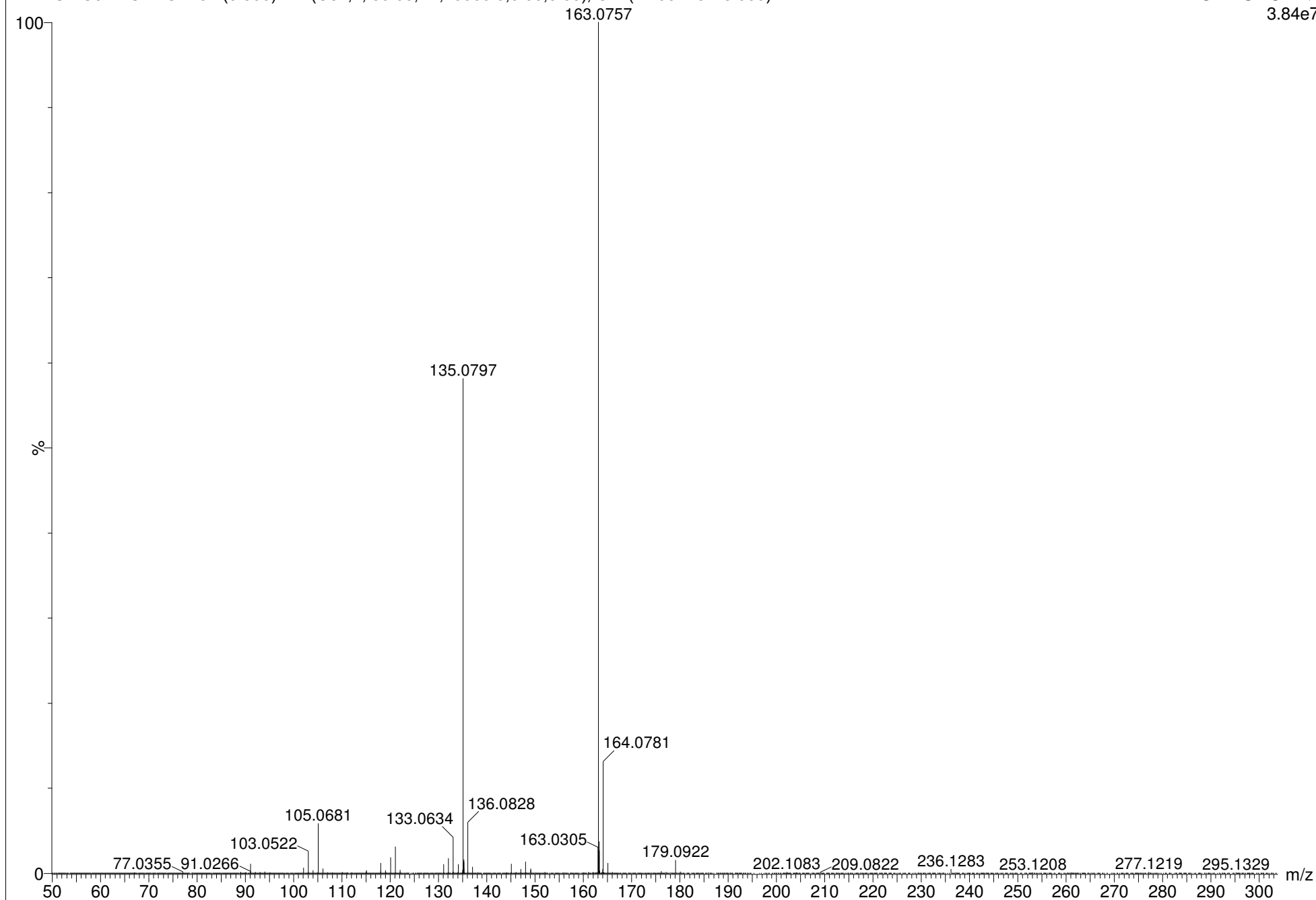
National Mass Spectrometry Facility, Swansea

Xevo G2-S

Rosie Croft

11-Apr-2017

1: TOF MS ASAP+
3.84e7



rc5-648 MW=194?

ASAP (SOLID)

C₁₁H₁₄O₃

IMPBUL-C3AMU-WG-A 91 (0.866) AM (Cen,4, 80.00, Ar,10000.0,0.00,0.00); Cm (71:95-1:32x5.000)

National Mass Spectrometry Facility, Swansea

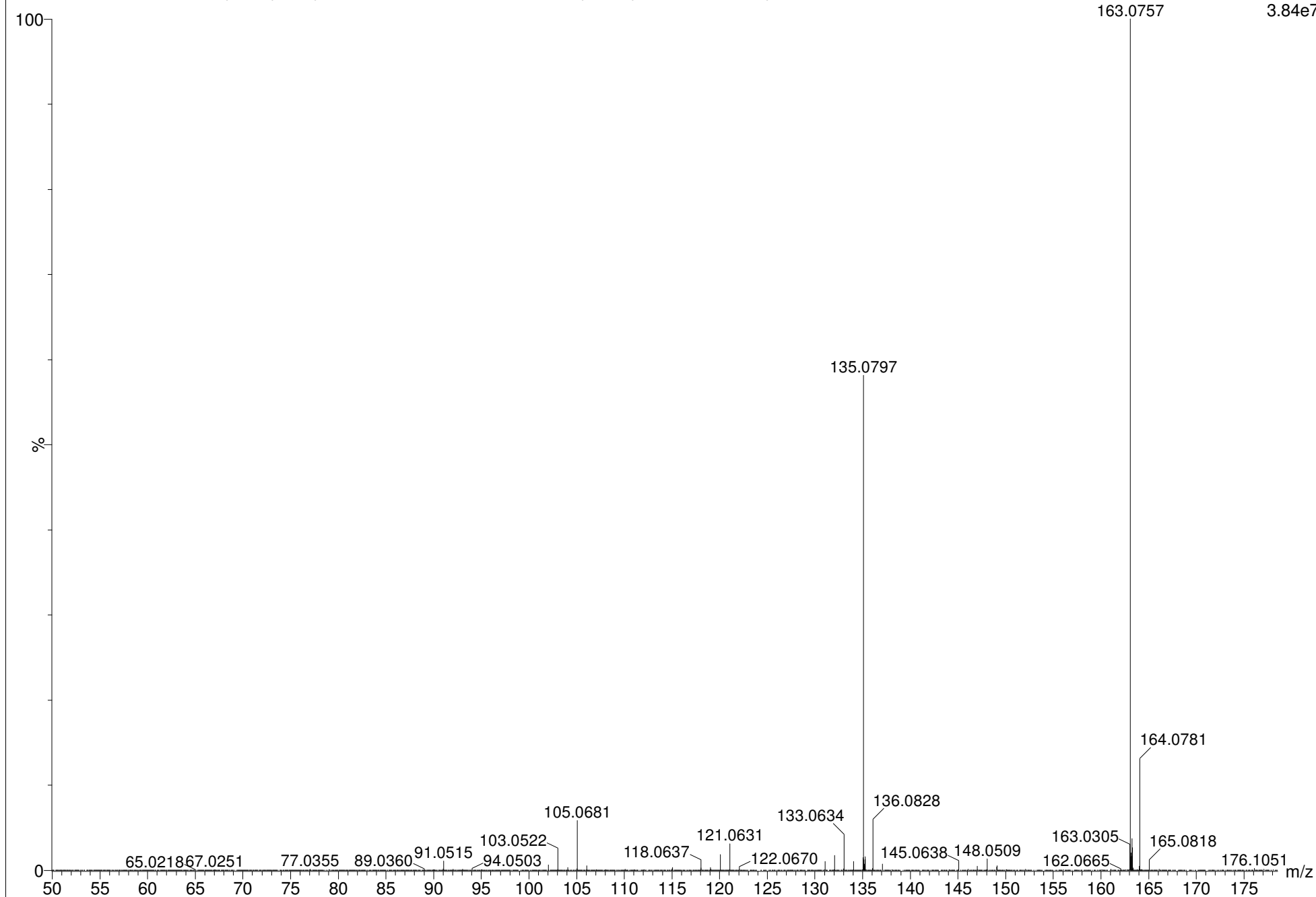
Xevo G2-S

Rosie Croft

11-Apr-2017

1: TOF MS ASAP+

3.84e7



rc5-648 MW=194?

ASAP (SOLID)

C₁₁H₁₄O₃

IMPBUL-C3AMU-WG-A 91 (0.866) AM (Cen,4, 80.00, Ar,10000.0,0.00,0.00); Cm (71:95-1:32x5.000)

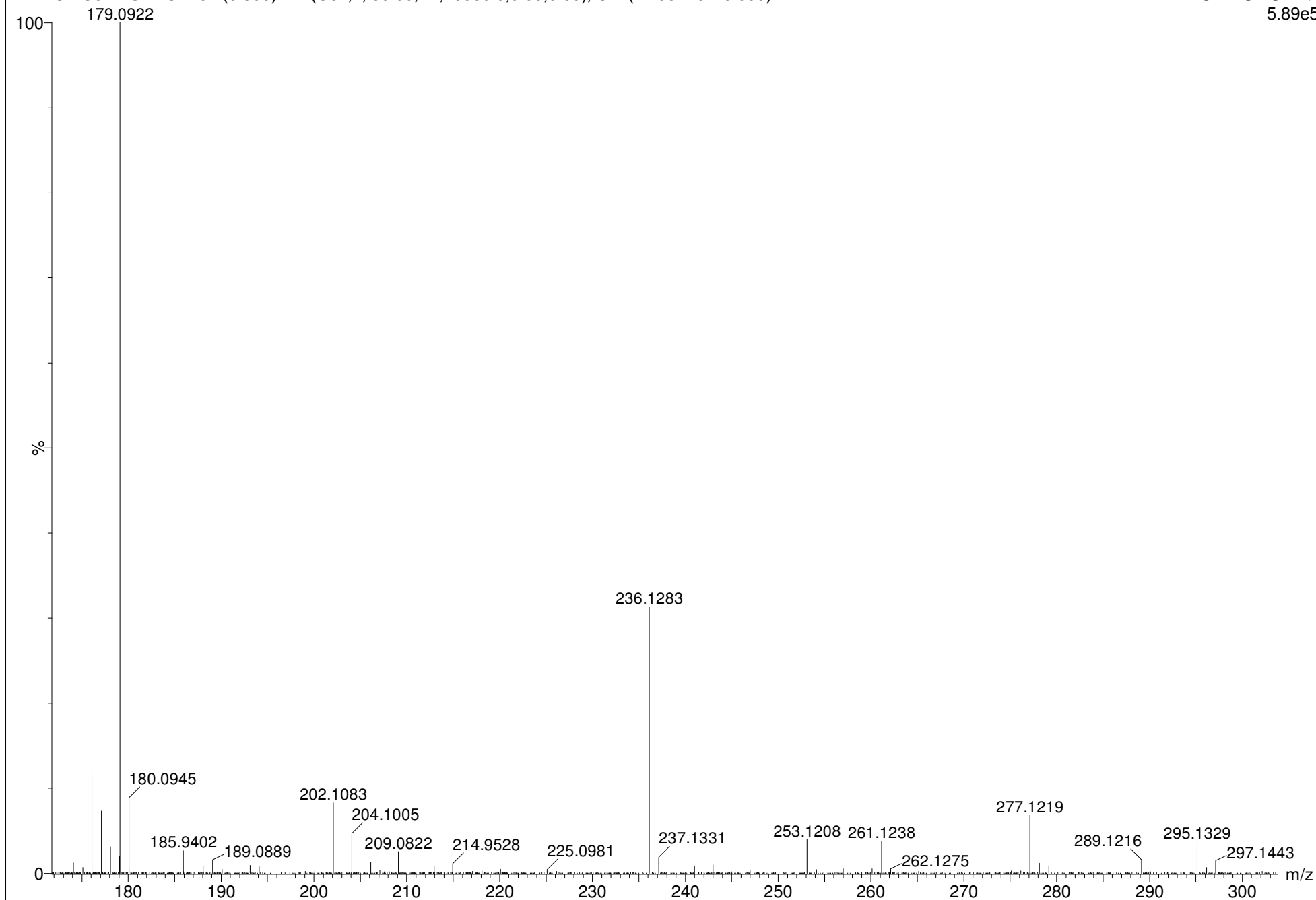
National Mass Spectrometry Facility, Swansea

Xevo G2-S

Rosie Croft

11-Apr-2017

1: TOF MS ASAP+
5.89e5



rc5-648 MW=194?

ASAP (SOLID)

C₁₁H₁₄O₃

IMPBUL-C3AMU-WG-A 91 (0.866) AM (Cen,4, 80.00, Ar,10000.0,0.00,0.00); Cm (71:95-1:32x5.000)

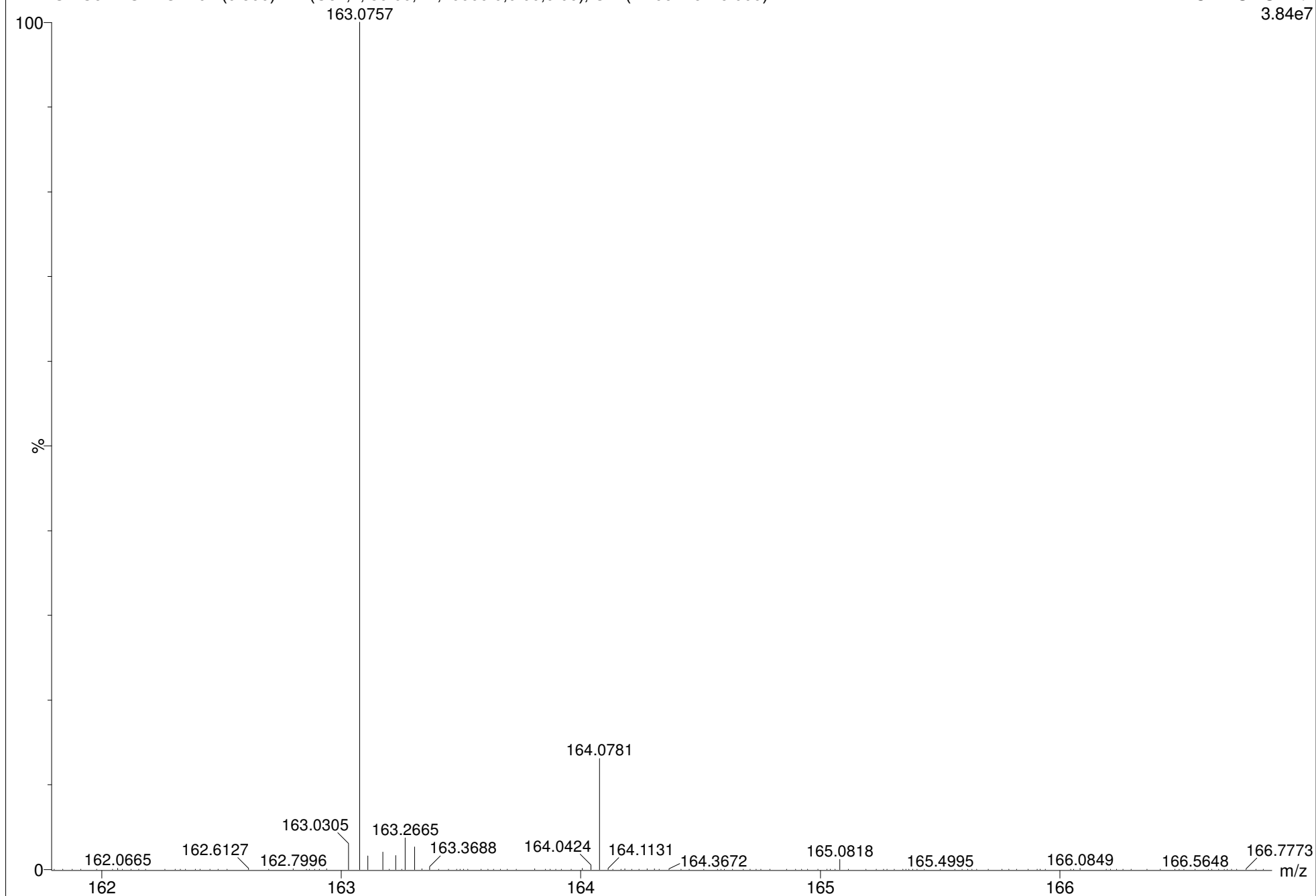
National Mass Spectrometry Facility, Swansea

Xevo G2-S

Rosie Croft

11-Apr-2017

1: TOF MS ASAP+
3.84e7



rc5-648 MW=194?

ASAP (SOLID)

C₁₁H₁₄O₃

IMPBUL-C3AMU-WG-A (0.037) Is (1.00,0.05) C₁₀H₁₁O₂

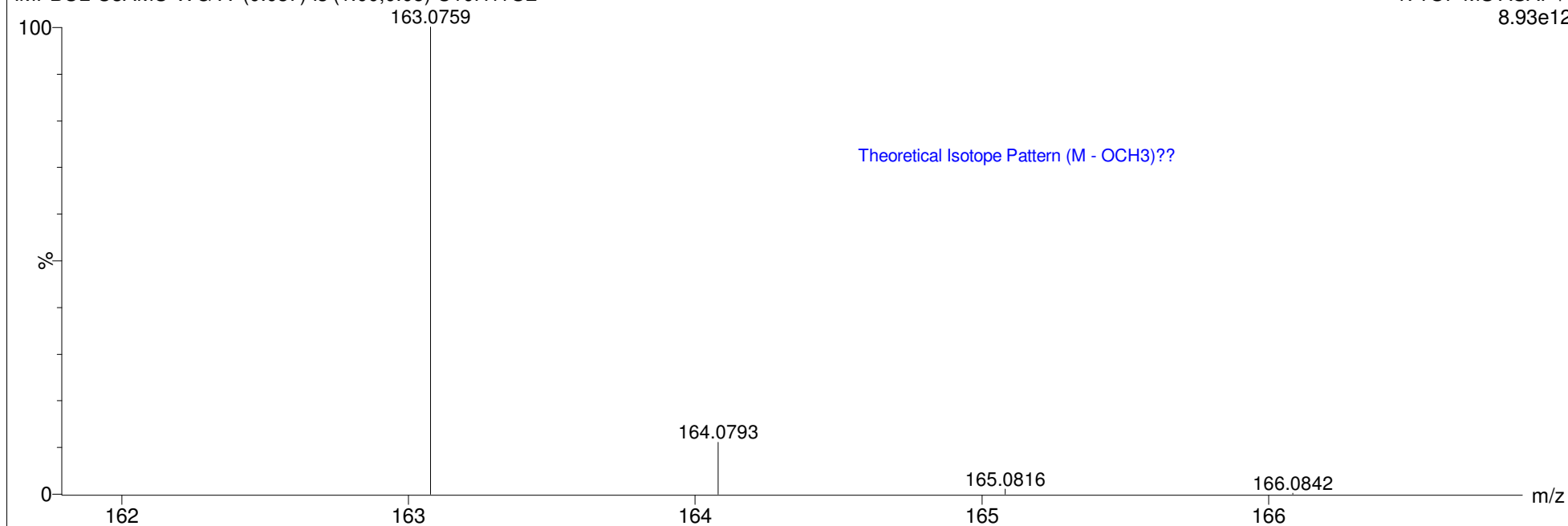
National Mass Spectrometry Facility, Swansea

Xevo G2-S

Rosie Croft

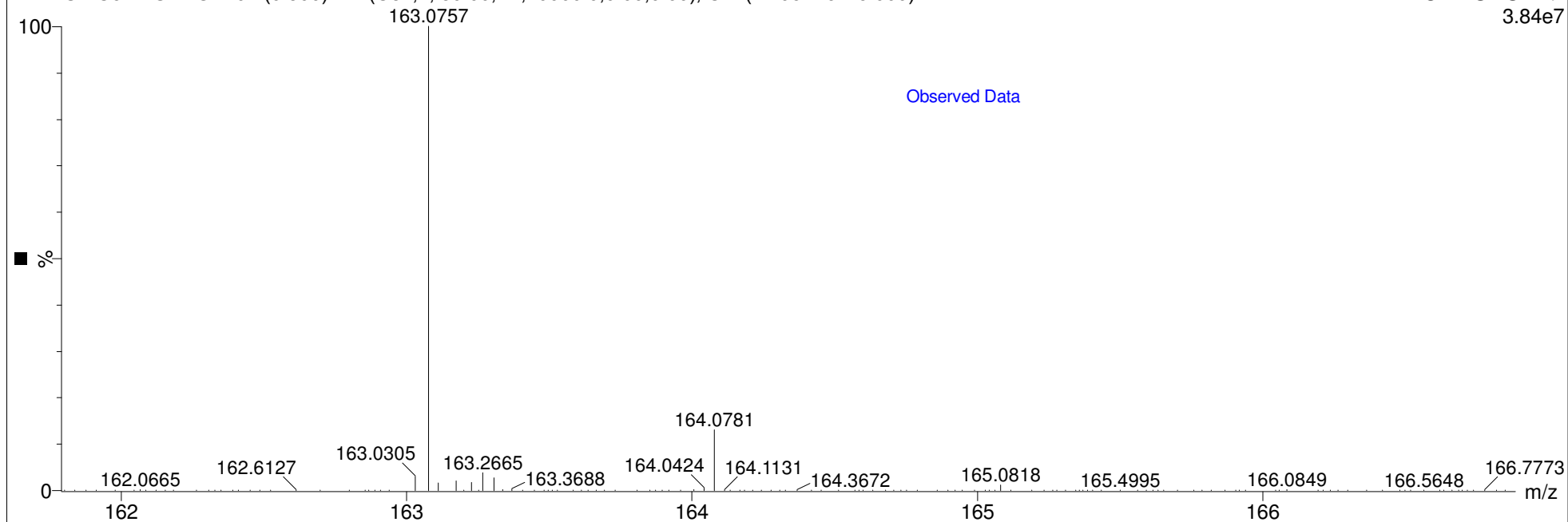
11-Apr-2017

1: TOF MS ASAP+
8.93e12



IMPBUL-C3AMU-WG-A 91 (0.866) AM (Cen,4, 80.00, Ar,10000.0,0.00,0.00); Cm (71:95-1:32x5.000)

1: TOF MS ASAP+
3.84e7



Single Mass Analysis

Tolerance = 5.0 PPM / DBE: min = -150.0, max = 100.0

Element prediction: Off

Number of isotope peaks used for i-FIT = 5

Monoisotopic Mass, Even Electron Ions

361 formula(e) evaluated with 1 results within limits (up to 500 closest results for each mass)

Elements Used:

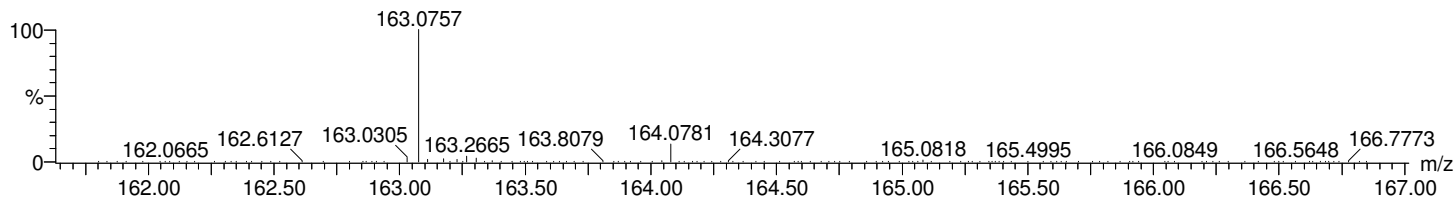
C: 0-60 H: 0-100 N: 0-10 O: 0-10

rc5-648 MW=194?

ASAP (SOLID)

C11H14O3

IMPBUL-C3AMU-WG-A 91 (0.866) AM (Cen,4, 80.00, Ar,10000.0,0.00,0.00); Cm (71:95-1:32x5.000)

National Mass Spectrometry Facility, Swansea
Xevo G2-SRosie Croft
11-Apr-20171: TOF MS ASAP+
3.84e+007

Minimum: -150.0

Maximum: 5.0 5.0 100.0

Mass	Calc. Mass	mDa	PPM	DBE	i-FIT	Norm	Conf (%)	Formula
163.0757	163.0759	-0.2	-1.2	5.5	1764.7	n/a	n/a	C10 H11 O2